



Flex Space FOR LEASE

Building 6 11212 Metric



Building 7 11100 Metric



Building 11 2207 West Braker



BRAKER CENTER

Braker Lane at Metric Blvd. | Austin, Texas 78758 | www.BrakerCenter.com

Project Description

- Braker Center contains 217,504 SF of flex space in three buildings:
 - Braker 6 – 11212 Metric Blvd. (39,825 total SF)
 - Braker 7 – 11100 Metric Blvd. (111,013 total SF)
 - Braker 11 – 2205 - 2229 Braker Ln. (66,666 total SF)
- 100% air-conditioned, dropped ceiling space
- Dock-high, semi-dock, and grade-level loading
- Clear height: average 16' to 18'
- Parking: up to 3.0 spaces per 1,000 SF
- Convenient to nearby restaurants and retail
- Excellent visibility on Braker Ln. and Metric Blvd.



Abe MacNeil – amacneil@tigusa.com
Tom Pardee – tpardee@tigusa.com

512.732.0400

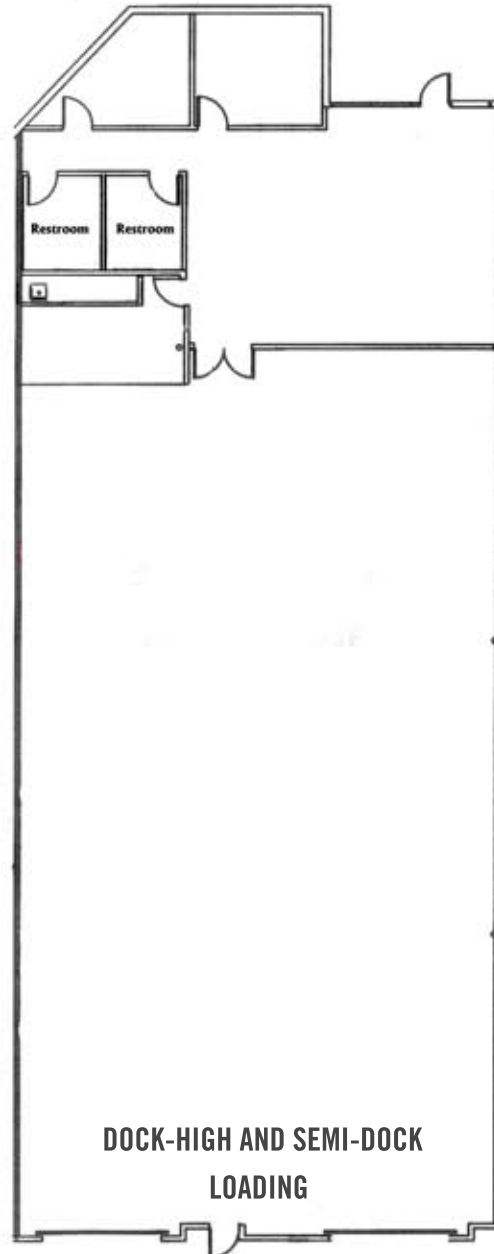
901 S. MoPac Expressway, Bldg. 4, Suite 285 | Austin, Texas 78746 | www.tigusa.com



Braker 11

2207 Braker Lane | Austin, TX 78758

Suite 2207 ±5,812 SF
100% AIR-CONDITIONED



Abe MacNeil – amacneil@tigusa.com
Tom Pardee – tpardee@tigusa.com

512.732.0400

901 S. MoPac Expressway, Bldg. 4, Suite 285 | Austin, Texas 78746 | www.tigusa.com